

Braun ThermoScan® PRO 4000 Ear Thermometer



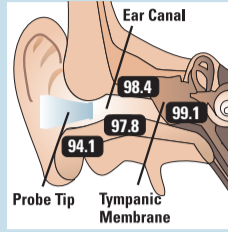
operation and technique

1.



Remove the thermometer from the case and attach a new probe cover. The device turns on automatically.

2.



Wait for the “ready” beep and place the probe snugly into the ear canal; correct probe placement is essential for accurate readings.

3.



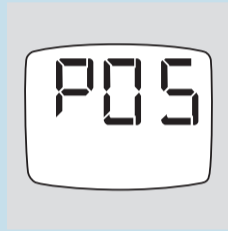
Press and release the Start Button. The thermometer will beep once. The green ExacTemp light above the Start Button flashes, indicating correct probe placement.

4.



A long beep and a solid green ExacTemp light signals the end of an accurate measurement. Eject the used probe cover. For the next measurement, put on a new, clean probe cover.


5.



If the probe is placed incorrectly or was moved while taking a temperature, the device beeps, the green ExacTemp light goes out and POS (Position Error) displays.

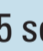
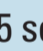
6.



Press  button to recall the last temperature.

7.



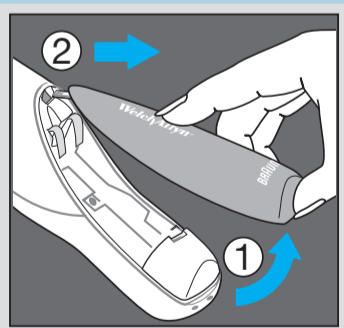
To change default temperature scale: With the device off, press and hold the  button for about 5 seconds. Release the  button when desired scale is shown.

what affects accuracy

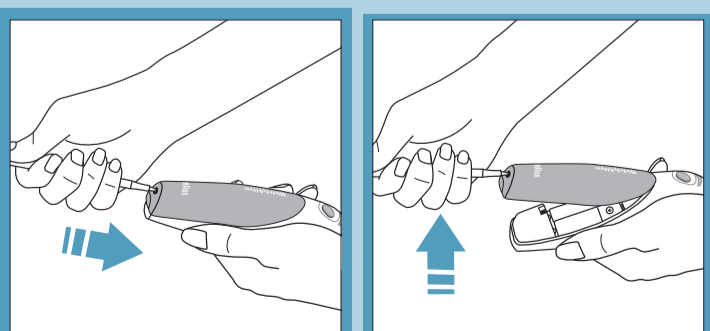
Factor	Affects Accuracy	
	Yes	No
Poor Probe Placement	✓	
No Probe Cover	✓	
Used Probe Cover	✓	
Ambient Temperature	✓	
Dirty/Chipped Lens	✓	
Hearing Aid	✓	
Lying on Pillow	✓	
Cerumen (ear wax)		✓
Otitis Media (ear infection)		✓
Tympanostomy tubes		✓

directions for opening battery cover

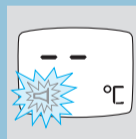
OLD INSTRUCTIONS



NEW INSTRUCTIONS



error messages and solutions



No probe cover is attached – Attach new, clean probe cover.



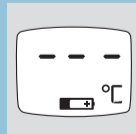
(POS = position error) The infrared monitor cannot find a temperature equilibrium and allows no measurement – Clear the display by changing the probe cover. Ensure that the positioning of the probe is correct and remains stable.



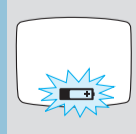
Ambient temperature is not within the allowed operating range 50-104 °F (10-40 °C) or changing too rapidly – Allow the thermometer to remain for 30 minutes in a room where the temperature is between 50 and 104 °F / 10 and 40 °C.



System Error – Wait 1 minute until the thermometer turns off automatically, then turn on again. **If error persists** reset the thermometer by removing the batteries and putting them back in. **If error still persists** contact your Welch Allyn representative.



Battery is low, but thermometer will still operate correctly – Insert new batteries.



Battery is too low to take correct temperature measurements – Insert new batteries.

For support, please contact Welch Allyn at 800.535.6663

www.welchallyn.com

ThermoScan is a registered trademark of Braun GmbH

© 2013 Welch Allyn Inc. All rights reserved.

MC10117 SM2679 Rev D

BRAUN

WelchAllyn®

Advancing Frontline Care™